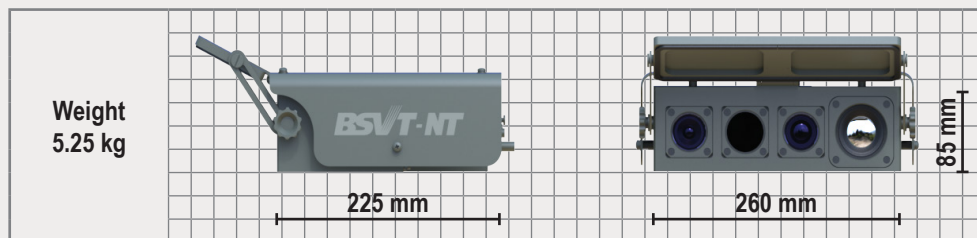
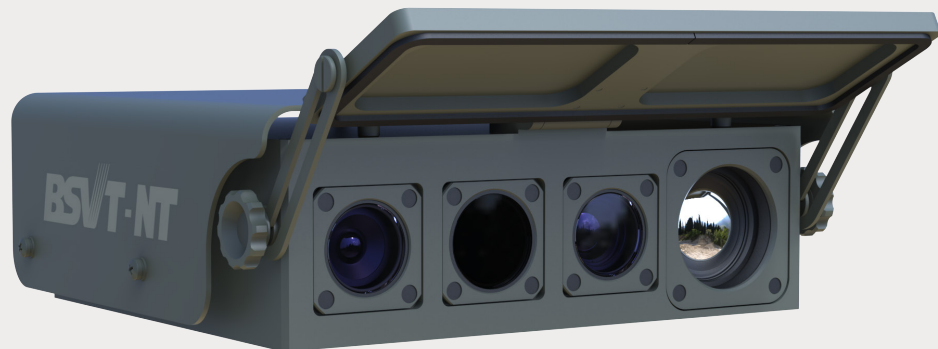


CHIZH

OPTICAL-ELECTRONIC STATION

Optical-electronic station “Chizh” based on the multispectral optical-electronic station that allows reconnaissance of airspace around the clock, as well as automatic detection and tracking of targets with the determination of their exact position and calculate the lead point for firing.

The digital computer calculates the lead point depending on the type of target, its distance and velocity vector, taking into account ballistic calculations.



	television	thermal vision
Type of receiver	CMOS NIR-enhanced	α -Si 17 μ m
Spectral sensitivity	0.4 – 1.1 μ m	8 – 14 μ m
Receiver resolution	4056x3040	640x480
Lens narrow field	F1.65/35 mm	F1.2/50 mm
Lens wide field	F2.2/5 mm	F1.0/10 mm
Narrow field of view	10°x8°	
Wide field of view	55°x43°	
Image transfer	Ethernet	
Frame rate	30 Hz	
Control	Ethernet, CAN	
Battery/Power	12 – 22 V	
Power consumption	17 W	
Operating temperature range	-30°C...+50°C	

