



PL64 ROBOTIC SCANNING SYSTEM

Short description

TECH PL64 is a high throughput X-ray screening solution, cost effective and optimized solution for container and trucks non-intrusive inspection in border crossing points, sea harbors, access points in military bases or any other high security areas.

The main advantage is the high flexibility of the solution meeting all customer requirements, in terms of performance, reliability and cost operation.

Tech PL64 was designed to provide high radiographic image quality and unparalleled high throughput of up to 200 trucks/containers per hour, avoiding traffic jam at the control site entrance.

- High throughput, fixed drive-through inspection system;
- Automatically inspects any type of vehicle driving at any speed below 15 km/h
- Low dose radiation providing protection for the driver of the scanned vehicle, operating personnel and bystanders
- Facilities for control and radiation safety customized according to specific needs of the customer
- Automatic protection of the exclusion area
- Very low cost of ownership for at least 10 years of life time
- Integrated data management
- Database to store all information related to the inspection
- Software black box support for logging of all user commands and parameters
- Video surveillance of the inspection area
- Advanced software, hardware and automation solutions
- Radioactive material detection capability with one additional pass of the inspected vehicle, or additional optional hardware and software.
- CE certification - Product manufactured in the European Union



ML64 ROBOTIC SCANNING SYSTEM

Short description

TECH ML64 — like our other products — gives peace of mind to security experts, government officials and logistics experts involved in border crossing.

The product helps professionals scan trucks of all sizes, from ultra light to medium and heavy, used in the transportation of goods in cross-border commercial exchanges.

To help solve the global security conundrum steeped in unlawful transportation, contraband and terrorist activities, to name just three, TECH ML64 provides an all-around solution that addresses the operational and safety needs of various stakeholders.

Whether it is a cargo transporting a massive volume of goods, or an ultra light pickup truck carrying people (and maybe contraband), TECH ML64 helps scan everything, performing quick inspections and providing high-resolution images and footage.

The product's capabilities extend beyond border control operations, enabling security professionals to implement fast and cost-effective measures in areas as varied as ports, logistics hubs and major retail distribution centers.

This patented remote-operation principle fuses technological sophistication and security knowhow to improve operational costs, eliminate the risk of professional radiation exposure, and provide 100% detection rates.

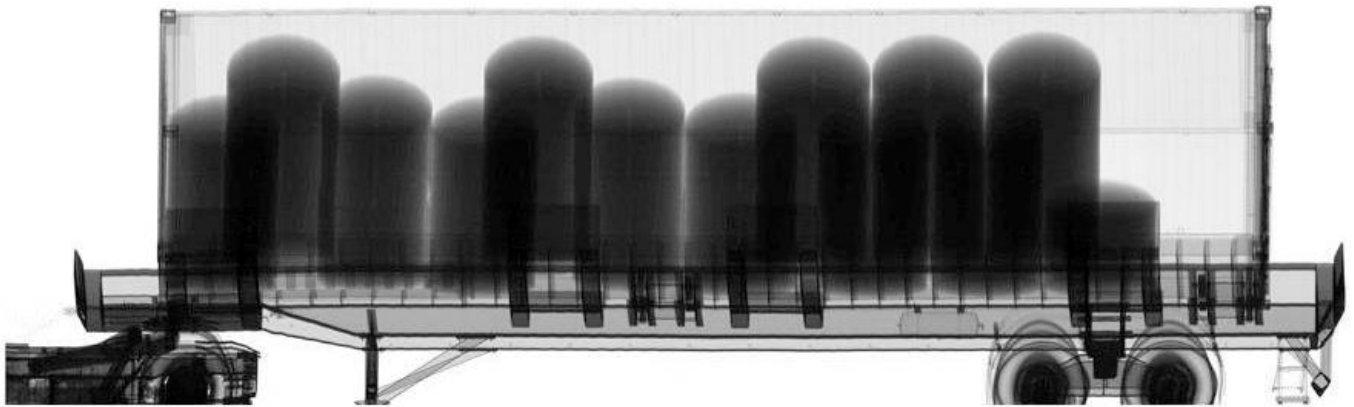


ML64 ROBOTIC SCANNING SYSTEM

Tech ML64 is a high throughput and cost effective X-ray screening solution for containers and trucks non-intrusive inspection in border crossing points, sea harbors, access points airports, military bases or any other high security areas. The scanner provides the radiographic image of the scanned object (goods loaded in container or truck) by using a dual high-energy linear accelerator (LINAC).

Tech ML64 is the only scanner fully remote operated by a single operators from a safe distance, ensuring total protection against ionizing radiation

- High throughput, fixed drive-through inspection system. Drive through scanning in portal model can scan more than 200 long vehicles/hour.
- Low dose radiation providing protection for the driver of the scanned vehicle, operating personnel and bystanders
- Facilities for control and radiation safety customized according to specific needs of the customer
- Automatic protection of the exclusion area
- Very low cost of ownership for at least 10 years of life time
- Integrated data management
- Database to store all information related to the inspection
- Software black box support for logging of all user commands and parameters
- Video surveillance of the inspection area
- Advanced software, hardware and automation solutions
- Radioactive material detection capability with one additional pass of the inspected vehicle, or additional optional hardware and software.
- CE certification - Product manufactured in the European Union



ML64 ROBOTIC SCANNING SYSTEM

What is it?

- Safe and cost-effective mobile scanner for trucks and containers
- Security tool

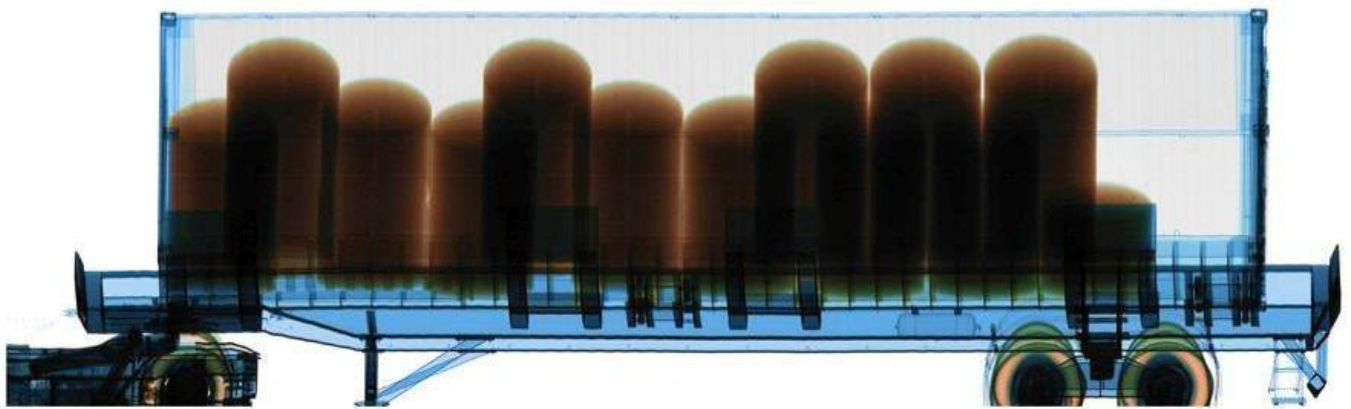
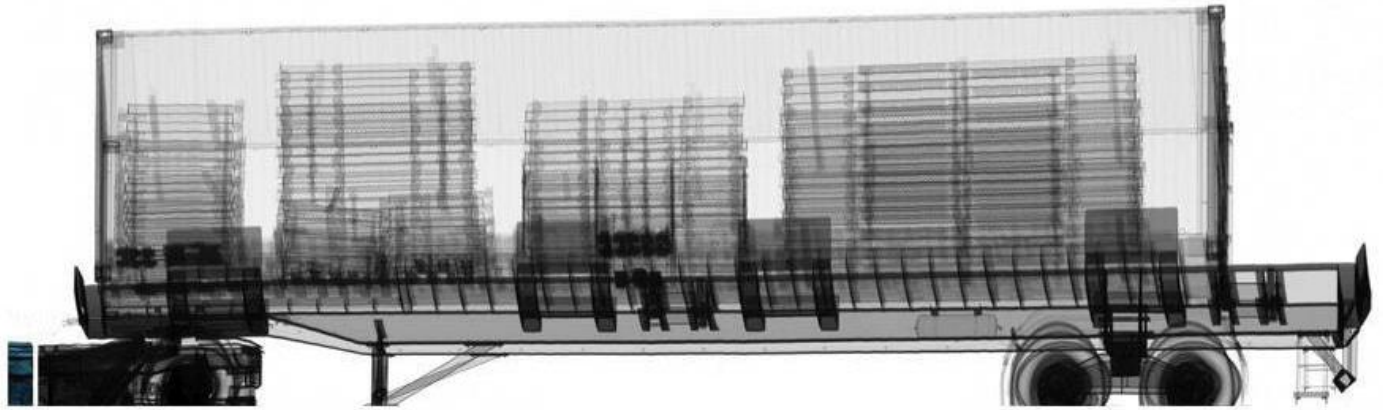
How does it do it?

- Uses transmission imaging and a Linear Accelerator LINAC with dual energy
- The system scans the entire truck/container from its' axles to its top without any image cut-off
- The radiographed image is analyzed using dedicated filters thus discriminating between organic, light organic or inorganic materials
- The systems scans in 3 modes: drive through, one-by-one and sequential;
- Detects contraband, illegal transports, various threats
- Detects modifications made to the scanned truck or to the scanned container
- Detects radioactive material in the scanned vehicles with the optional module

Why implement it?

- Scans up to 200 trucks in drive through mode with a scanning speed of 5-15 km/h
- Only needs 1 operator per shift
- It's mobility feature allows it to be deployed in multiple locations like checkpoints, border crossings or high-profile venues;
- It's the only scanning device ever created to be remotely operated;

ML64 ROBOTIC SCANNING SYSTEM



- High throughput – up to 200 vehicles per hour in drive through mode (vs. Nuotech MT1213LT – 150 vehicles, Rapiscan EAGLE M60 – 100 vehicles)
- Remote operability – unique feature (vs. Nuotech, Rapiscan or Smith which do not provide this feature) based TST international patent
- Minimum number of operators - 1 / shift due to its' remote operability feature (vs. Nuotech – 3 operators/shift, Rapiscan – 2 operators/shift, Smith and L3 – 3 operators/shift)
- Totally eliminates accidental irradiation – no operator is needed inside the exclusion area while scanning – unique feature based on TST international patent
- Installation time – under 5 minutes (vs. Rapiscan, Nuotech and L3 that require under 30 minutes)
- Lowest Total Cost of Ownership in the industry

